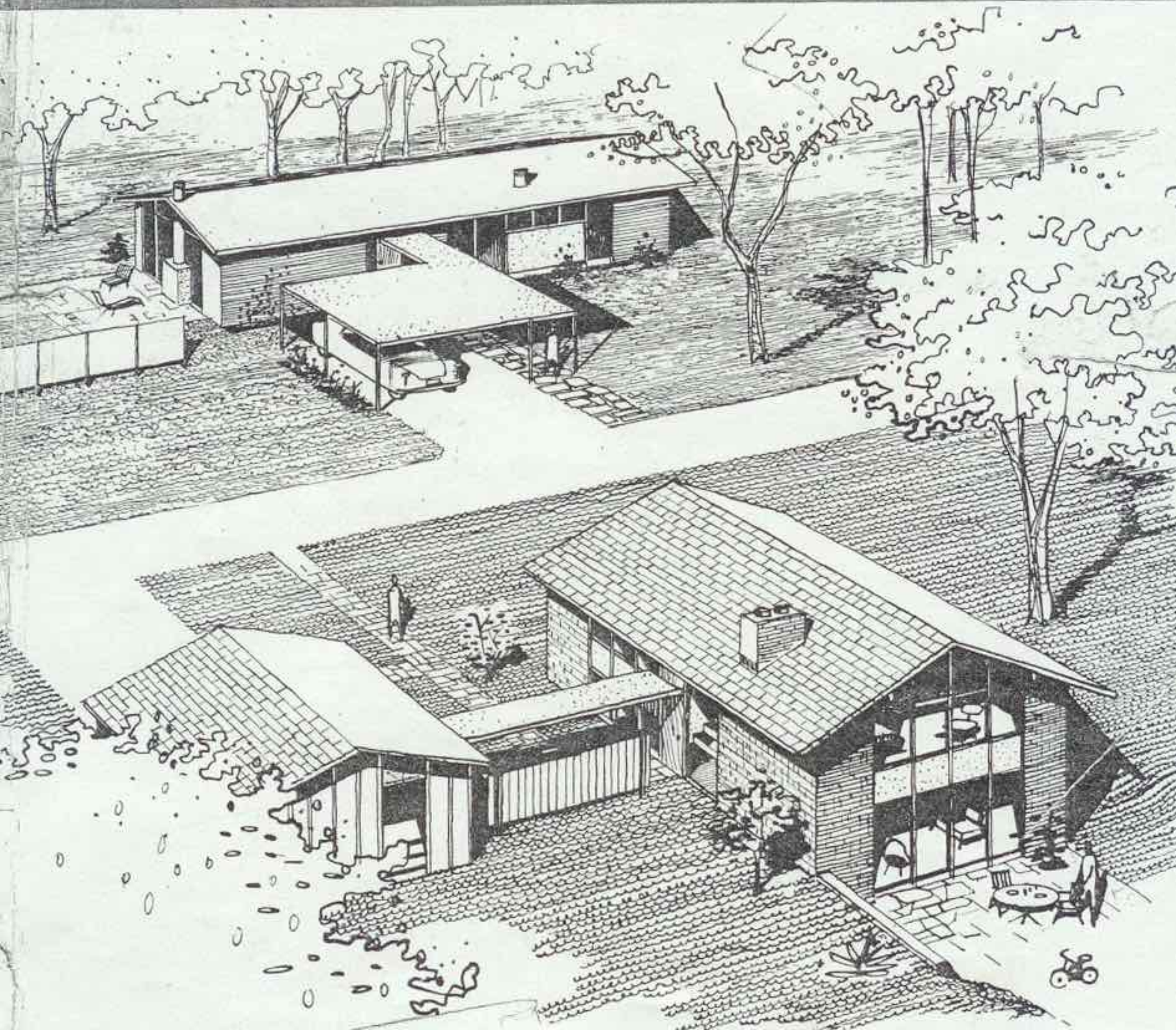


Holly Hill Farms

CONTEMPORARY HOMES +
A WOODLAND COMMUNITY =
EASY ELEGANT LIVING



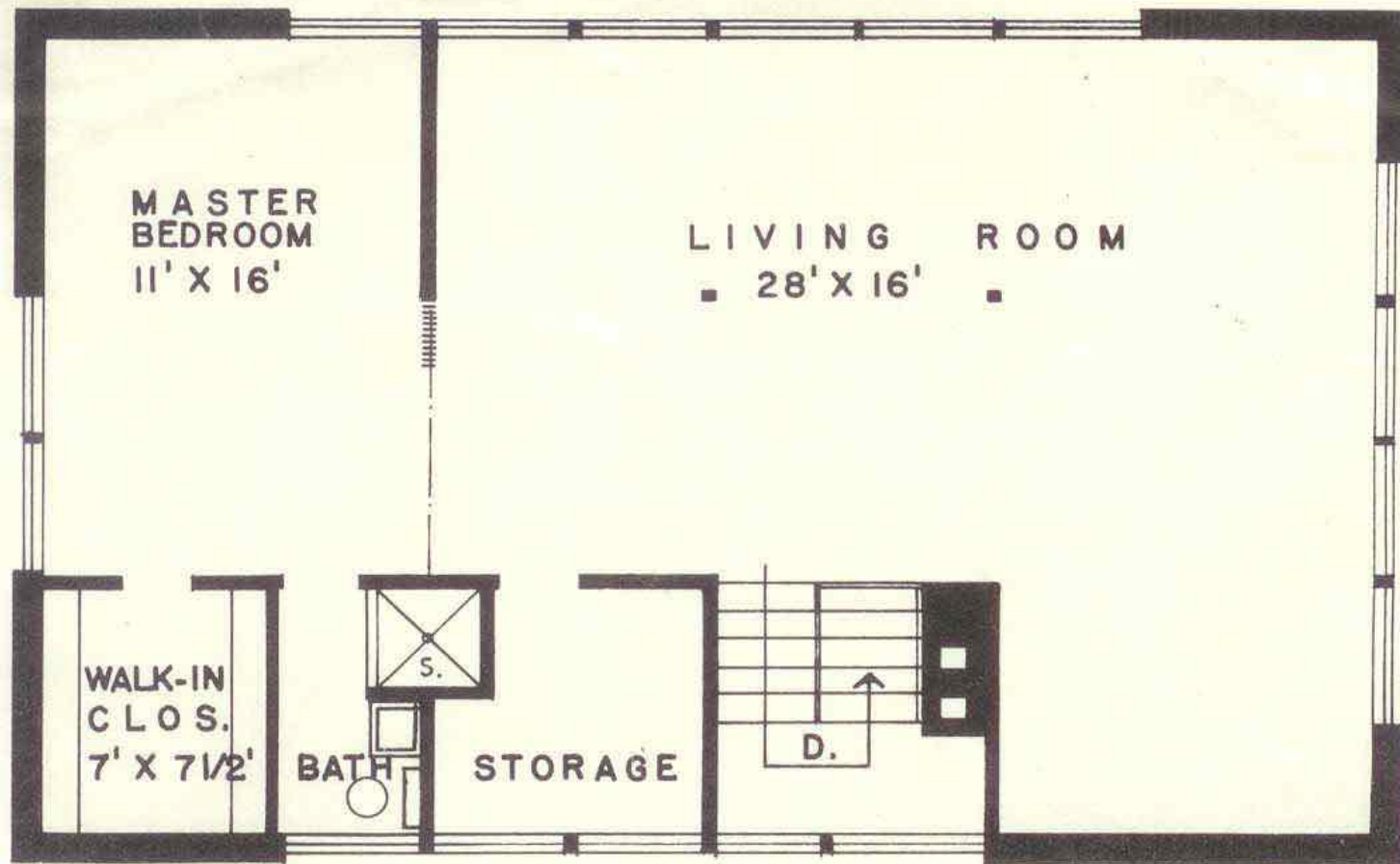
Just 40 minutes from downtown Detroit in the heart of the picturesque wooded Bloomfield-Franklin district, lies beautiful Holly Hill Farms, a unique community of contemporary homes.

This woodland setting, endowed by nature with the peaceful charm of tree crested hills, sunny meadows, rippling brooks and clear spring fed Holly Lake, affords an enchanting choice of either a sweeping vista or a cloistered ravine for the location of that "home of your dreams".

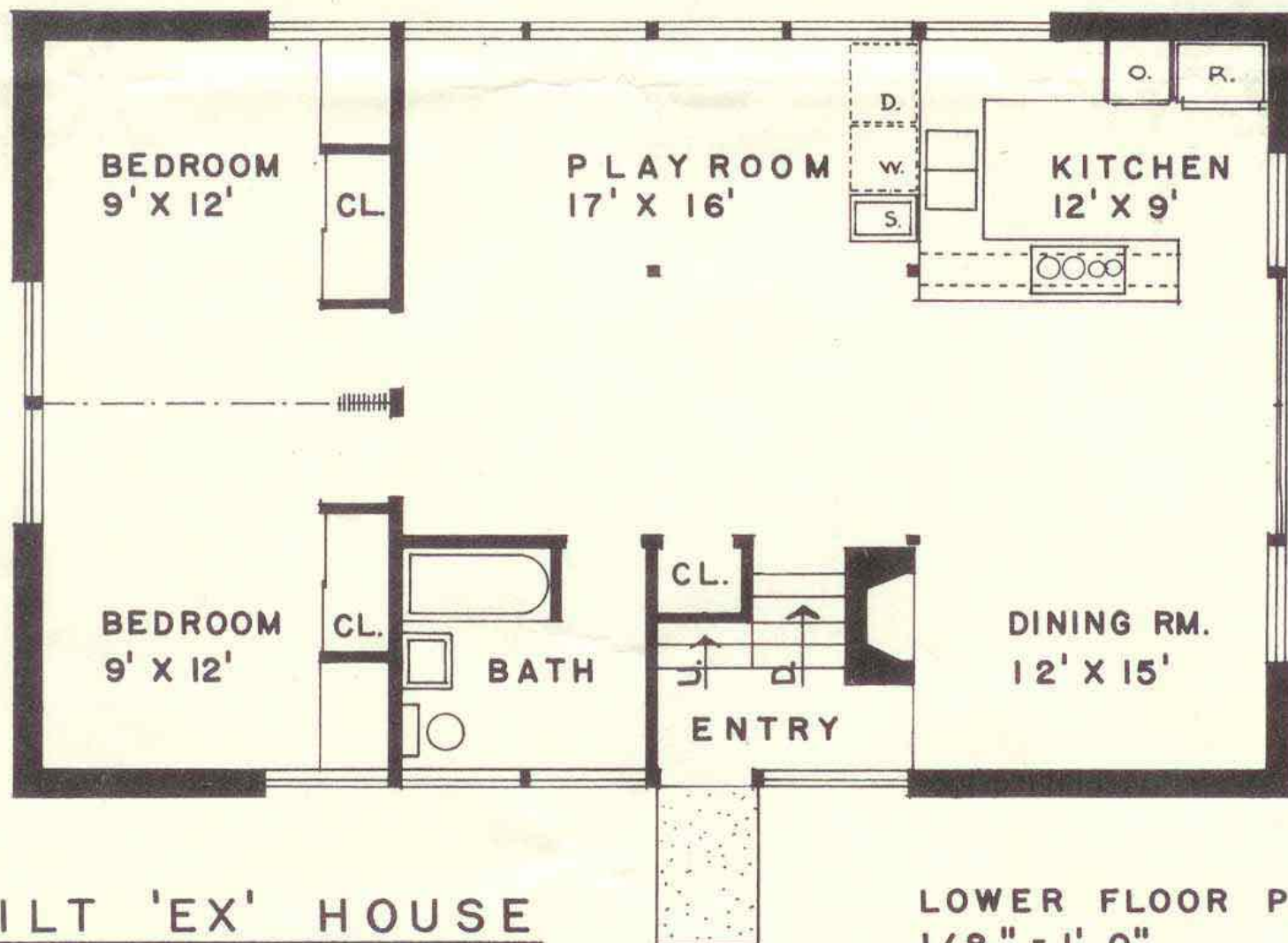
You will experience, you will thrill to a new, easy, elegant way of living in homes designed and oriented for your individual homesite by modern architects.

- A short drive to Franklin, Farmington and Birmingham
- 10 minutes to Northland Shopping Center
- 31 Lakes, 37 Golf Courses within 10 miles
- Churches of all faiths within easy driving distance
- Free busses to finest, modern public and parochial schools
- Large lots, minimum 1/2 acre, priced as low as \$2880
- Curved roads, no thru streets, for your family's safety
- Careful siting, and color co-ordination by architect insures privacy and tasteful neighborhood.
- Customized plans and elevations insure variety of design
- All natural assets "trees, slopes, etc." carefully preserved
- Opening planning, bigger windows, a house you can stretch out in
- Flexible rooms, planned storage, a home that grows with the family
- A kitchen planned by experts, handcrafted in fine cabinet woods
- Studio ceilings, custom fireplaces, a house you will be proud to own
- Quality construction of modern materials for easy maintenance
- Featuring the TECHBUILT house First Award American Institute of Architects - 1954
- "Best Home for Family's with Children" - Parents Magazine Award
- A HOME IN HOLLY HILL FARMS:

A DECISION THAT WILL AFFORD YOU LIFELONG TRANQUILITY



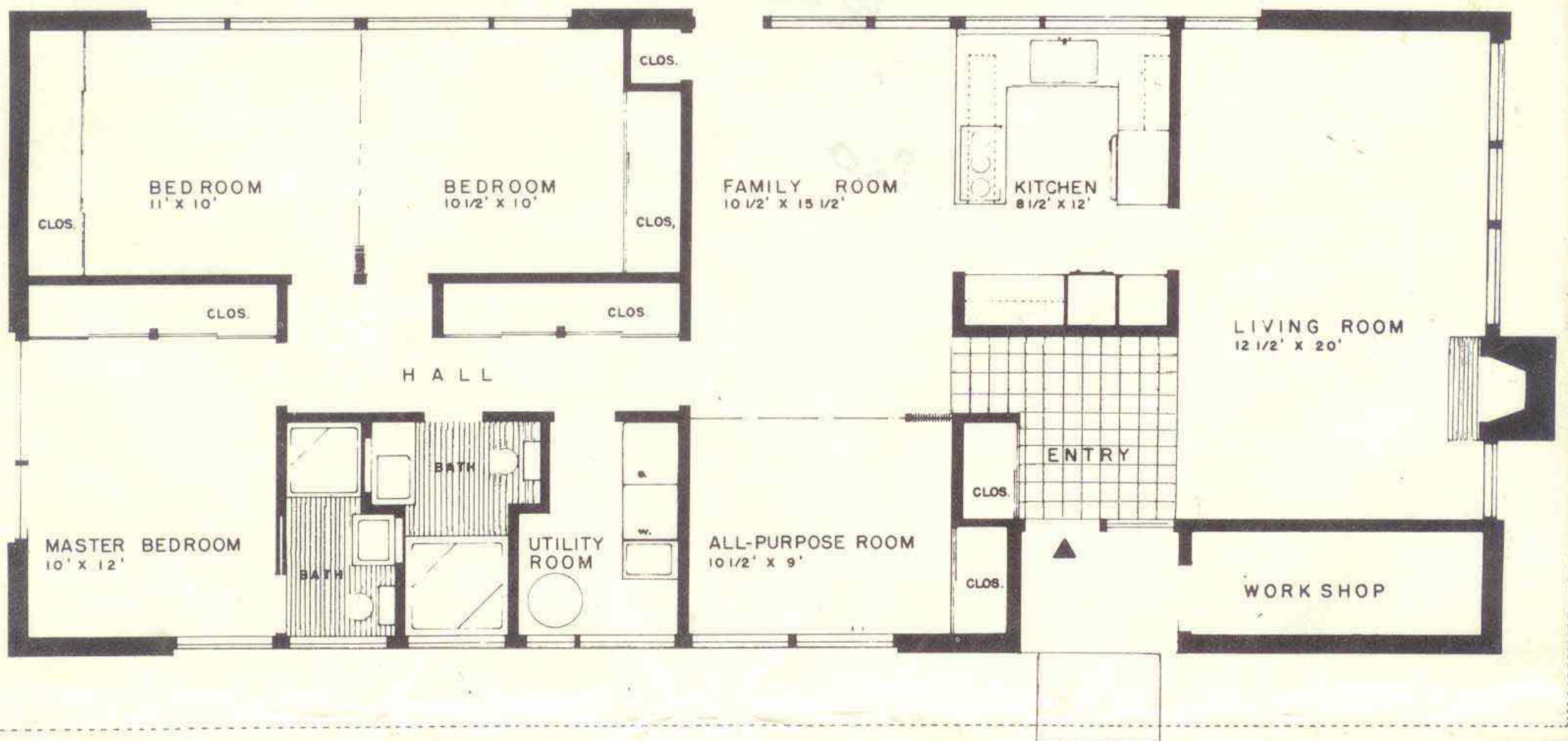
UPPER FLOOR PLAN



LOWER FLOOR PLAN
1/8" = 1'-0"

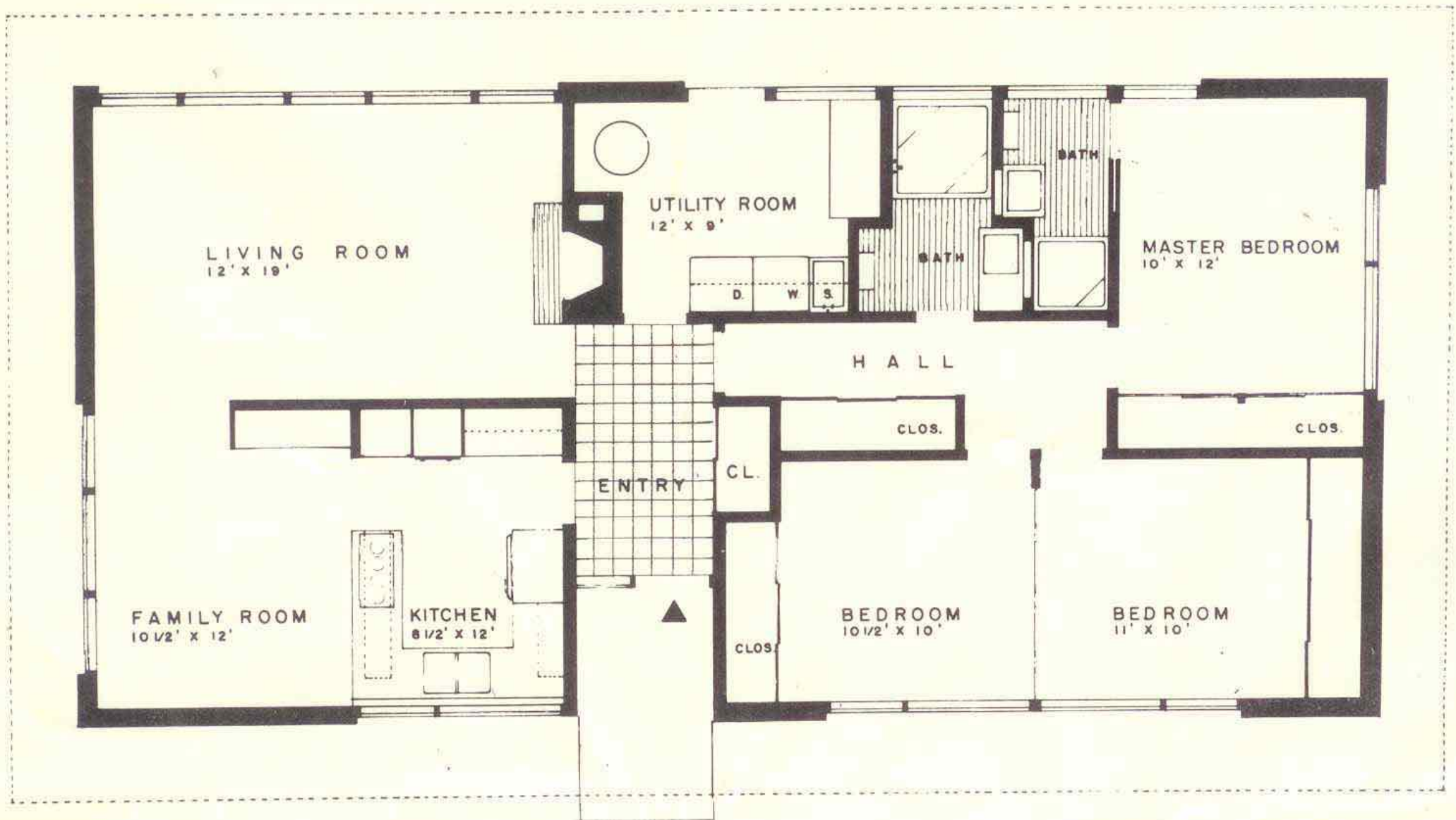
TECHBUILT 'EX' HOUSE
CARL KOCH & ASSOCIATES ARCHITECT

WOLFE - G. CHRIST INC. BUILDERS



FLOOR PLAN
1/8" = 1'-0"

HOLLY HILL HOUSE - TYPE 1
JOSEPH CYR, A.I.A. ARCHITECT



FLOOR PLAN
1/8" = 1'-0"

HOLLY HILL HOUSE - TYPE 2
JOSEPH CYR, A.I.A. ARCHITECT